

1 NO POVERTY



Goal 1: No Poverty

End poverty in all its forms everywhere.

There are many types of poverty in the world. Poverty can be due to a lack of money, or food, or education, or shelter, or healthcare, or water.

World leaders are taking action to reduce poverty by providing better opportunities for people to get a job, to go to school, and to see a doctor.

Bees have a very important role in helping us achieve no poverty. We are now going to explore some interesting facts about the bee and create a bee station.

The large role of the tiny bee

Bees help prevent poverty by doing a very important job in nature called pollination. When they visit plants, they collect pollen grains on their bodies. They carry these grains to another plant to allow pollination to occur and more plants will grow. These plants provide us with food to eat.

Bees also make honey. When they visit flowers they also collect a substance called nectar. They carry the nectar to their hive where it is turned into honey. Honey can have many different flavours, as we have many different flowers that provide the nectar that makes honey.

Bees have a large role in ensuring we end poverty by providing food and opportunities to work through farming. We must take care of bees and protect them so that they can keep doing their very important work.

1. Pollination is the transfer of pollen from a male part of a plant to a female part of a plant to produce seeds.

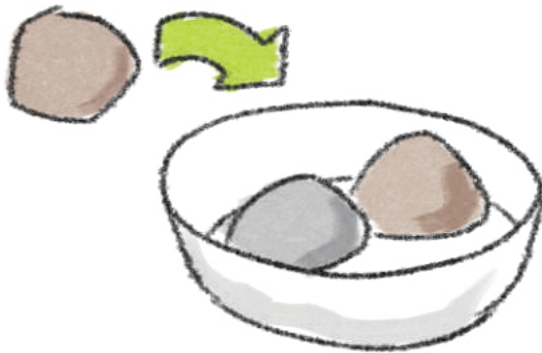


Experiment - Make a Water Station for Bees



What you need:

- A shallow bowl or dish
- Some small stones
- Fresh water
- Flowers for decoration



1. Place the stones in the dish.



2. Fill the dish with water so that the water level is a little bit below the stones.



3. Decorate the water station with some flowers.

Inspect the flowers at the end of the day.
Do you notice any difference?
Remember to put fresh water in every day.

What are your thoughts?

Have you learned something new about bees?
What would you do to achieve no poverty?

What Do We Learn From This Experiment?



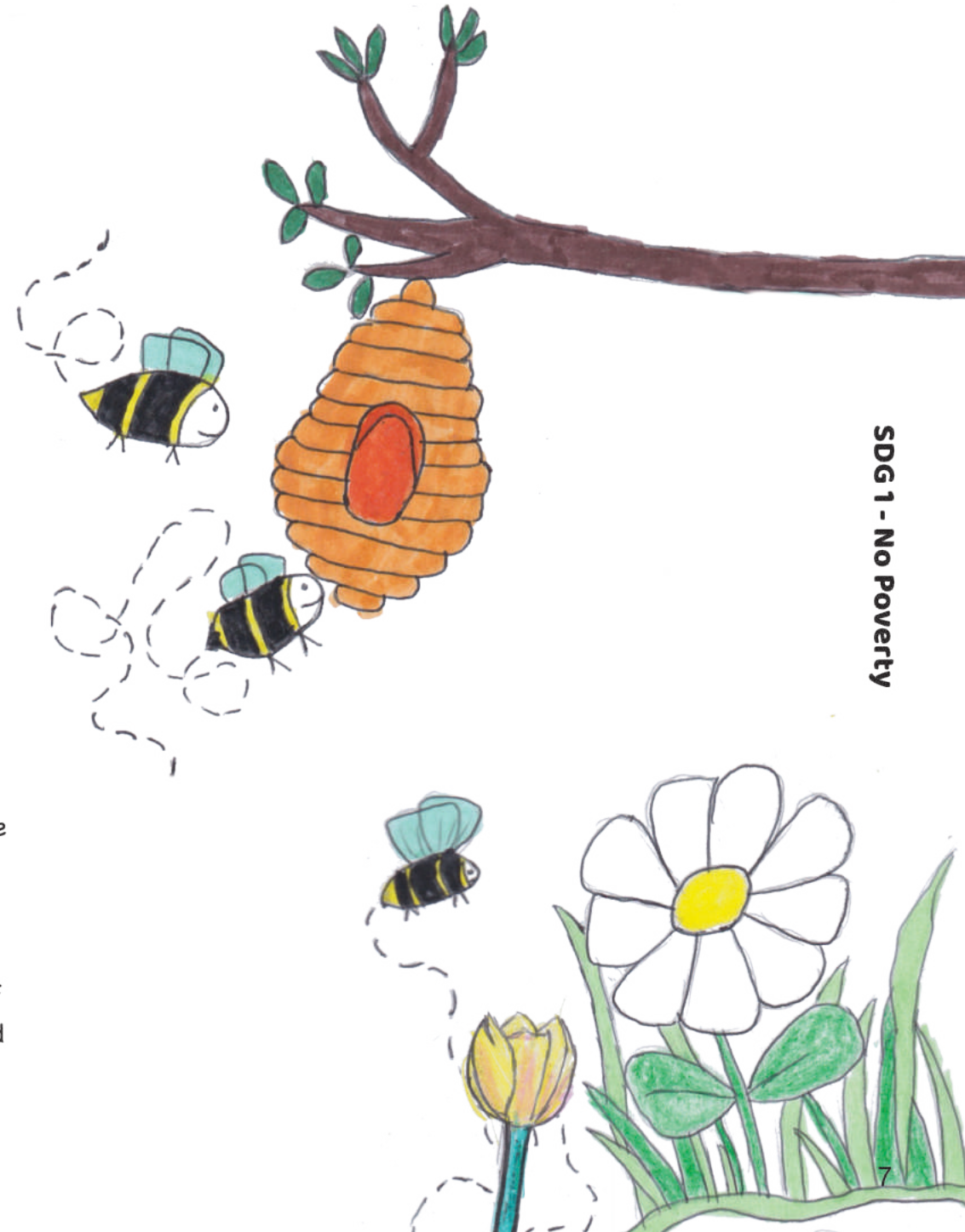
Make a Water Station for Bees

The water stations were decorated with different types of flowers to provide nectar for the bee. Pollen grains on the flowers are also collected by the bee as it visits the flower.

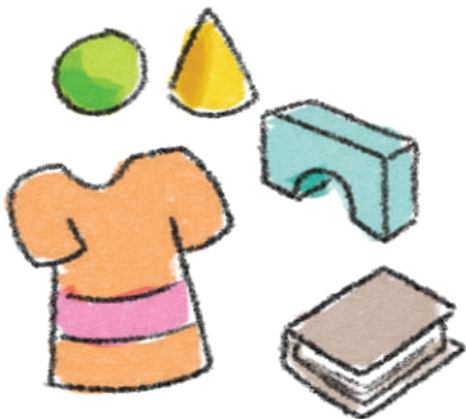
Pollen grains appear as a fine dust on the flower. You may be able to guess if a bee visited your water station by inspecting the flower for pollen grains. Of course, other insects may have visited the water station and explored the flowers too.

You may also be able to guess what type of bee visited the water station by putting flowers with different shapes and sizes on the water station. The size and shape of a bee's tongue will determine the type of flower that it can feed from.

Long-tongued bees can feed from flowers shaped like tubes whereas short-tongued bees prefer to feed on open flowers. Sometimes, short-tongued bees will make a hole at the base of the flower to feed on the nectar. Other bees are specialist and can only feed on very specific flowers. Can you guess what type of bee visited your water station?



What Can We Do?

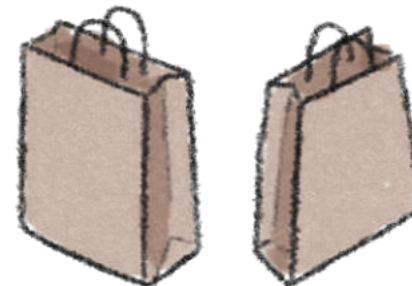


Donate any clothes, toys, or books you no longer use to charity or second-hand shops.

SDG 1 is all about ending poverty in all its forms everywhere.

It can be hard to know the things we can do in our lives to make a difference, but by following some of the tips on this page we can start making the world better for everyone. You may not think that little changes will make a difference, but everyone making little changes adds up to big change.

10%



Encourage your family to buy products from shops and businesses that donate a portion of their money to charity.



Create awareness posters about the impact of poverty for display in your school and local businesses.



Participate in classroom activities that increase your understanding of poverty.



Encourage your family to support local shops and businesses.